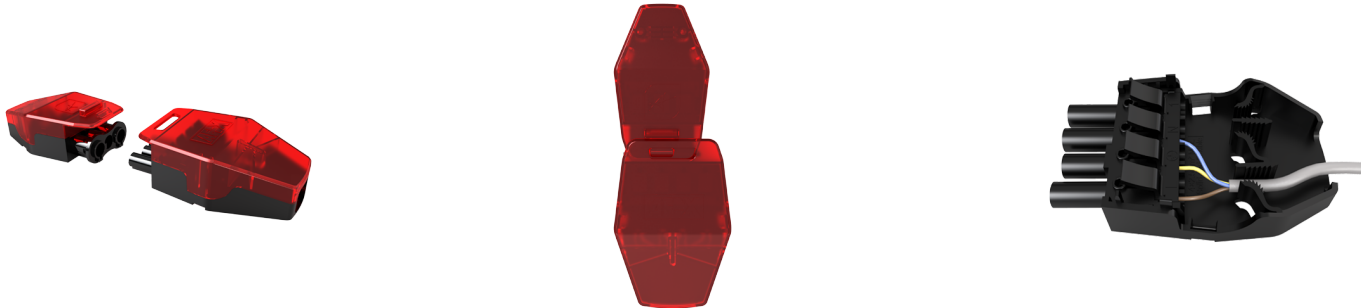


Application	Ancillary, Commercial, Education, Healthcare, Hospitality, Industrial, Outdoor
Specification	Performance

# AFIX Connector

AFIX 3 Pole Connector

Code: AFIX/3P/1



## PRODUCT FEATURES

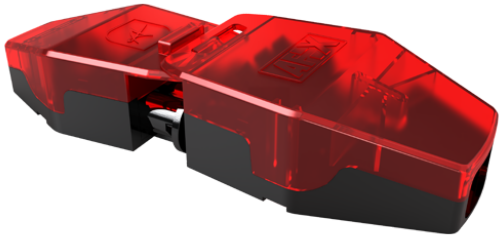
- Plug and play connectors suitable for use with internal luminaires across a range of applications
- Innovative testing port feature allows quick and easy access for fixed wire testing
- Available in both 3 and 4 poles
- Push fit connections and a 2 part click-and-connect design ensure a quick and easy installation
- Cable clamp design provides a safe and secure cable connection

## GENERAL INFORMATION

Input	250V
Product Weight without Packaging	4.399

## TECHNICAL INFORMATION

Colour / Finish	Black, Red
IP Rating	IP20
Internal / External	Internal
Warranty (Years)	5
CE Mark	Yes
Height	28 mm



<b>Application</b>	Ancillary, Commercial, Education, Healthcare, Hospitality, Industrial, Outdoor
<b>Specification</b>	Performance

# AFIX Connector

AFIX 3 Pole Connector

Code: AFIX/3P/1

