



Electronic direct-on-line starter with STO, 2.4A ME024FSD024

Product designation

Product type designation

### Electrical features

Function	Direct-On-Line starter	
Rated operational voltage	V	40...500
Rated frequency	Hz	50/60
Auxiliary supply voltage		24VDC
Rated current AC-3, AC-53a	A	2.4
Thermal protection	Integrated, class 10A	
Thermal trip adjustment range	0.18...2.4A	
Safe torque Off (STO) safety function	Built-in	
IEC 61508 Safety Integrity Level	SIL3	
ISO 13849-1 performance level	PL e	

### Digital outputs

Number of outputs	Nr.	2
Output type	1 relay output with C/O contact +1 PNP digital output	
Output contacts ratings	Relay output: 3A 230V AC15, 2A 24V DC13 Digital output: 40mA 24VDC	

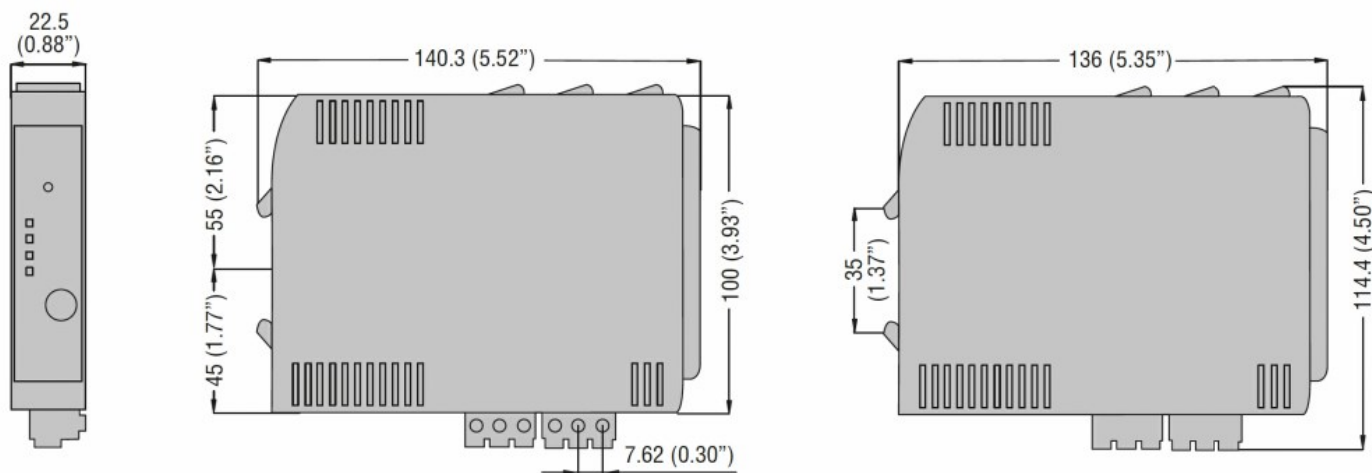
### Mechanical features

Terminals type				Screw			
Conductor section							
AWG/kcmil conductor section				min		24	
				max		14	
IEC				min		mm <sup>2</sup>	0.2
				max		mm <sup>2</sup>	2.5
Tightening torque for terminals max				Nm		0.6	
				mm		8	
Cable stripping lenght							
Operating position							
normal				Vertical			
				35mm DIN rail (IEC/EN/BS 60715)			
Fixing							
Weight							
				g		300	

### Operations

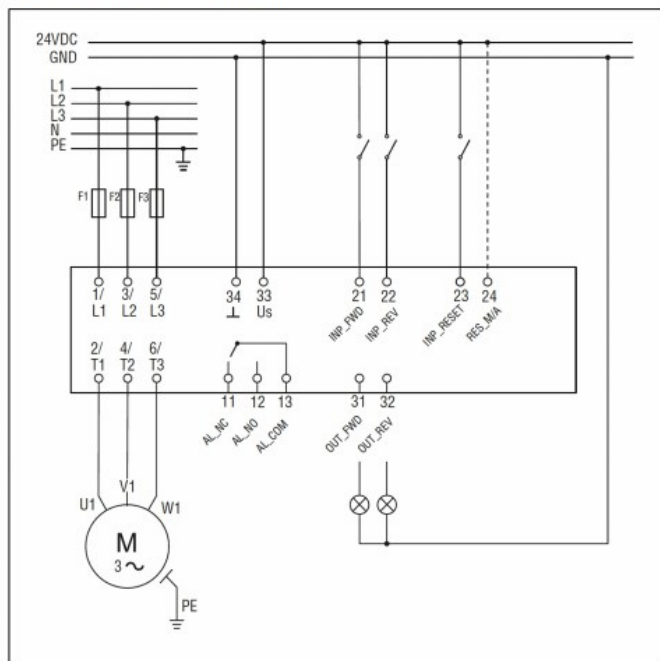
Mechanical life	cycles	15 million
Electrical life	cycles	50 million
<b>Ambient conditions</b>		
Operating temperature	min	°C -25
	max	°C +70
<b>Storage temperature</b>		
	min	°C -25
	max	°C +80
Relative humidity	%	20...90
<b>Resistance &amp; Protection</b>		
Rated insulation voltage Ui	V	500
Rated surge voltage	kV	6
Frontal IP degree		IP20
Terminals IP degree		IP20
Pollution degree		2

#### Dimensions

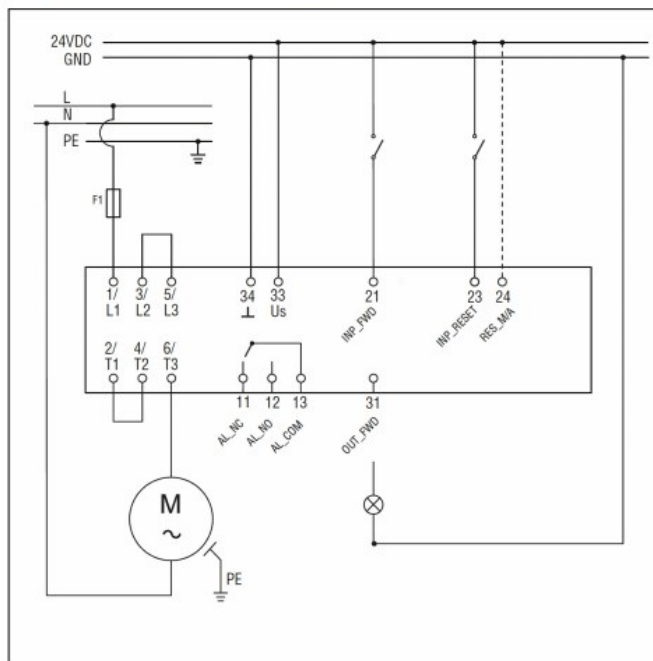


#### Wiring diagrams

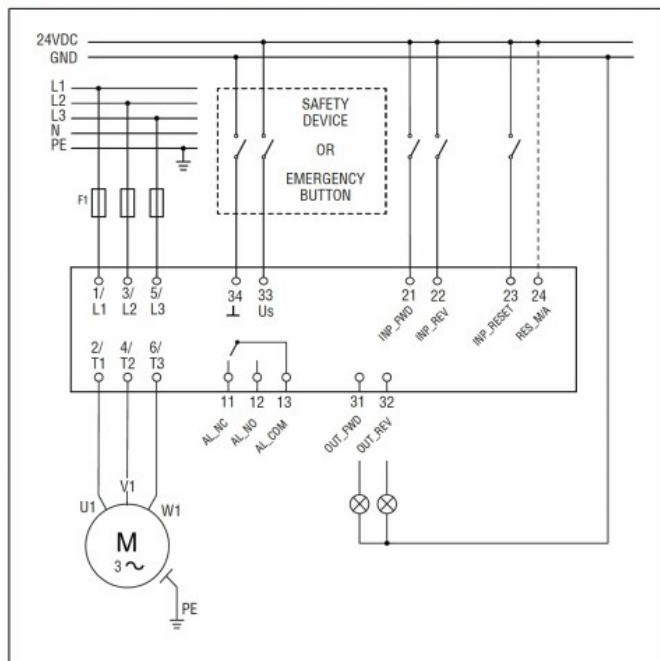
Wiring diagram for three-phase motors



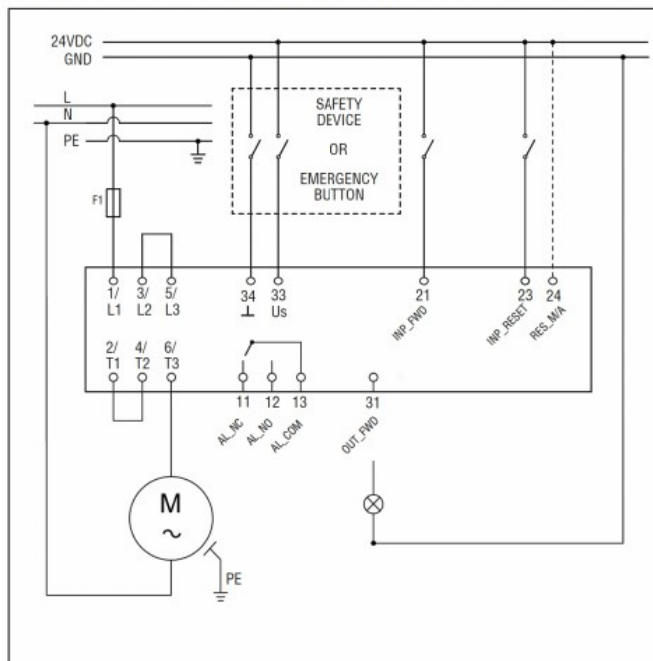
Wiring diagram for single-phase motors



Wiring diagram for three-phase motors for safety applications



Wiring diagram for single-phase motors for safety applications



## Certifications and compliance

### Compliance

CSA C22.2 n° 60947-4-2

IEC/EN/BS 60947-4-2

UL 60947-4-2

### Certificates

cULus

## ETIM classification

ETIM 8.0

EC001037 -  
Motor starter /  
Motor starter  
combination