



Product designation

Product type designation

Electronic direct-on-line starter, 7A
ME070FD024

Electrical features

Function	Direct-On-Line starter	
Rated operational voltage	V	40...500
Rated frequency	Hz	50/60
Auxiliary supply voltage		24VDC
Rated current AC-3, AC-53a	A	7
Thermal protection	Integrated, class 10A	
Thermal trip adjustment range	1.5...7A	
Safe torque Off (STO) safety function	No	

Digital outputs

Number of outputs	Nr.	2
Output type	1 relay output with C/O contact +1 PNP digital output	
Output contacts ratings	Relay output: 3A 230V AC15, 2A 24V DC13 Digital output: 40mA 24VDC	

Mechanical features

Terminals type				Screw	
Conductor section					
AWG/kcmil conductor section					
				min	24
				max	14
IEC					
				min	mm ² 0.2
				max	mm ² 2.5
Tightening torque for terminals				max	Nm 0.6
Cable stripping lenght					mm 8

Operating position	normal	Vertical
Fixing	35mm DIN rail (IEC/EN/BS 60715)	
Weight	g	300

Operations

Mechanical life	cycles	15 million
Electrical life	cycles	50 million

Ambient conditions

Operating temperature

min	°C	-25
max	°C	+70

Storage temperature

min	°C	-25
max	°C	+80

Relative humidity % 20...90

Resistance & Protection

Rated insulation voltage U_i V 500

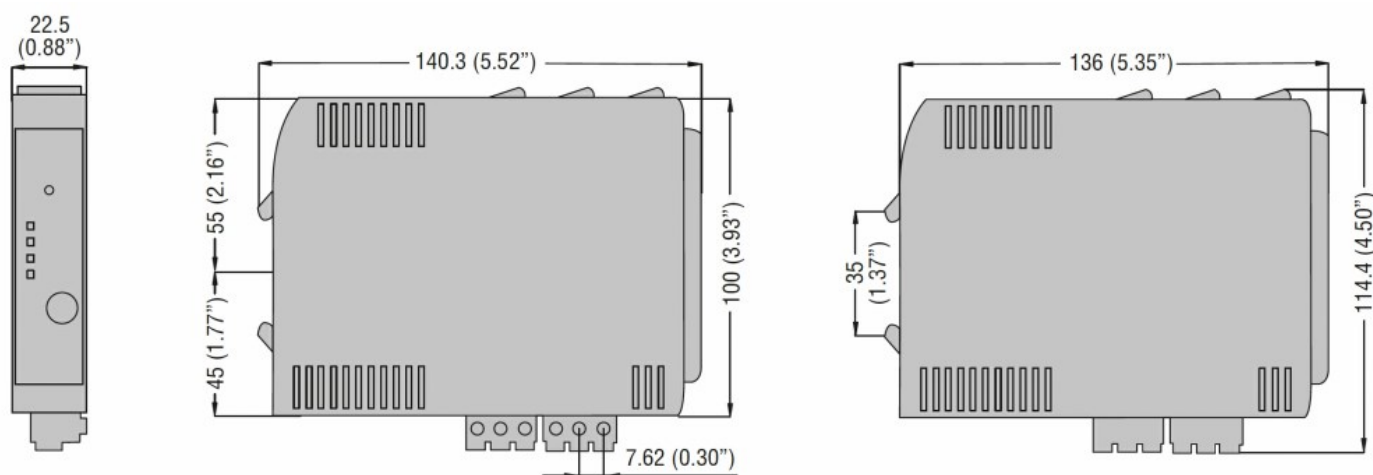
Rated surge voltage kV 6

Frontal IP degree IP20

Terminals IP degree IP20

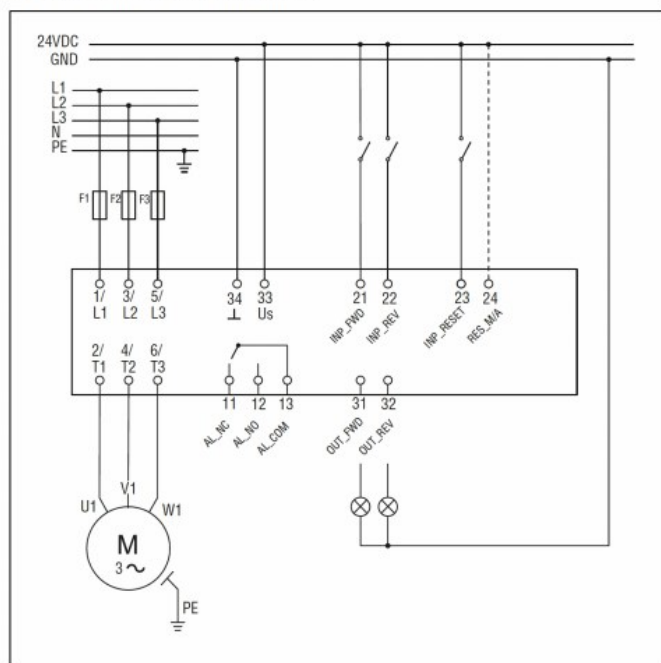
Pollution degree 2

Dimensions

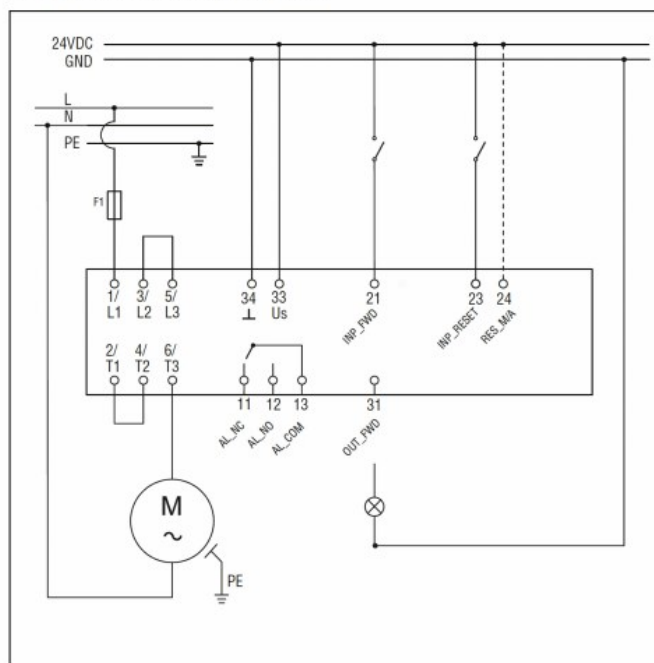


Wiring diagrams

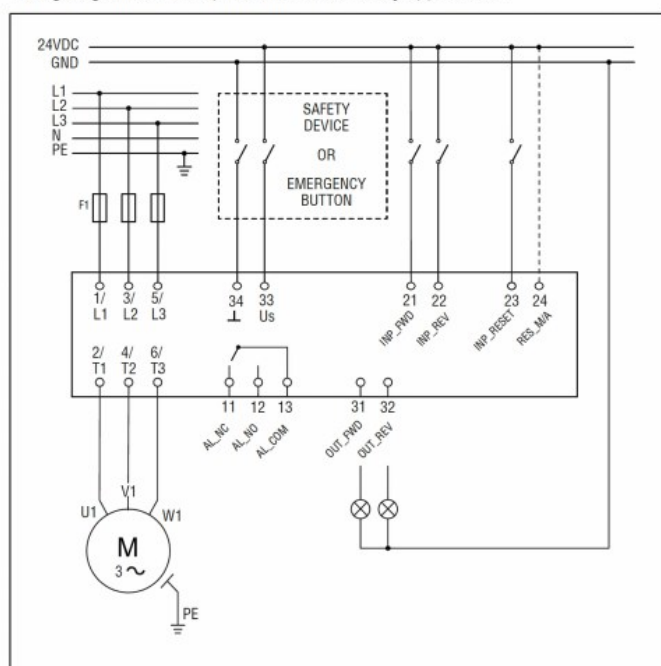
Wiring diagram for three-phase motors



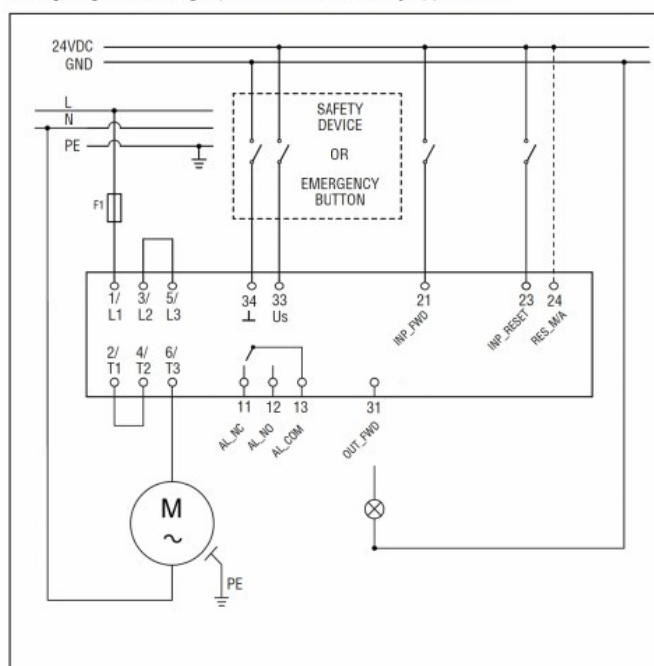
Wiring diagram for single-phase motors



Wiring diagram for three-phase motors for safety applications



Wiring diagram for single-phase motors for safety applications



Certifications and compliance

Compliance

CSA C22.2 n° 60947-4-2

IEC/EN/BS 60947-4-2

UL 60947-4-2

Certificates

cULus

ETIM classification

ETIM 8.0

EC001037 -
Motor starter /
Motor starter
combination